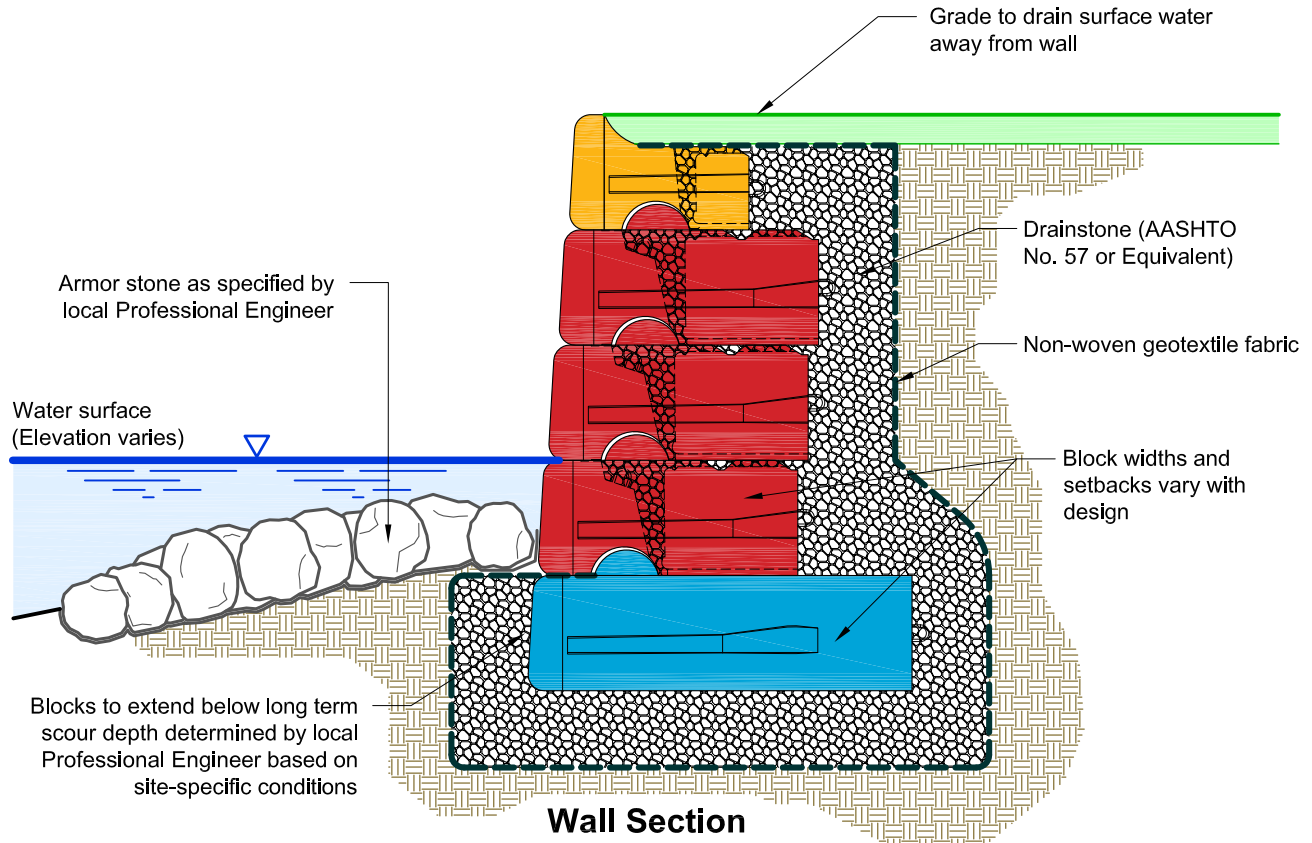
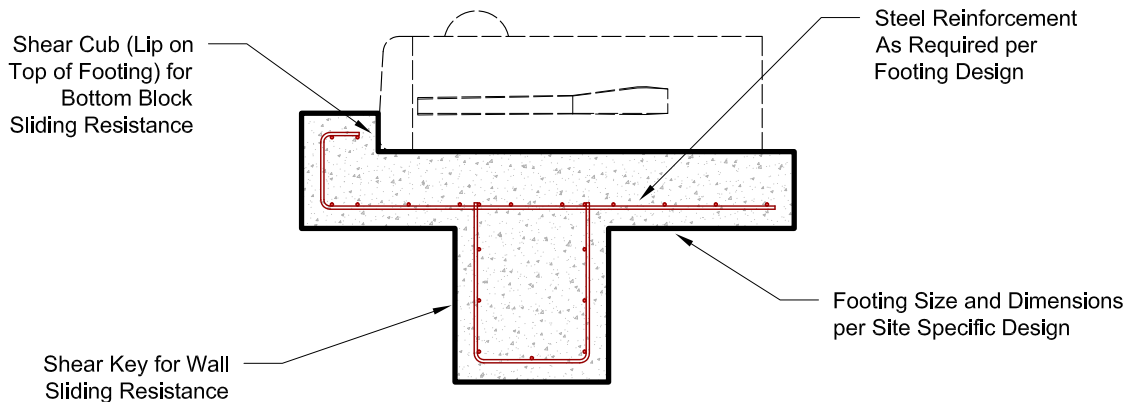


## Conceptual Seawall Detail



### Notes:

- Use ASTM No. 57 stone (or as specified by local Professional Engineer) to infill between blocks.
- Preliminary wall height charts do not apply and should not be used for walls in water applications due to the variety of site-specific variables.
- Contact your local Professional Engineer for specific details and final design.
- Walls may require geogrid reinforcement.
- Refer to final engineering plans.



### Optional Concrete Footing

This drawing is for reference only. Determination of the suitability and/or manner of use of any details contained in this document is the sole responsibility of the design engineer of record. Final project designs, including all construction details, shall be prepared by a licensed professional engineer using the actual conditions of the proposed site.

|              |           |
|--------------|-----------|
| DRAWN BY:    | JRJ       |
| APPROVED BY: | JRJ       |
| DATE:        | 17MAR2016 |
| SHEET:       | 1 of 1    |

|        |  |
|--------|--|
| TITLE: | Conceptual Seawall Detail<br>Normal Setback Blocks |
| FILE:  | 1 Conceptual Seawall Detail - Normal 031716.dwg    |

**REDI-ROCK®**  
 05481 US 31 SOUTH, CHARLEVOIX, MI 49720  
 (866) 222-8400 ext 3010 • engineering@redi-rock.com  
[www.redi-rock.com](http://www.redi-rock.com)